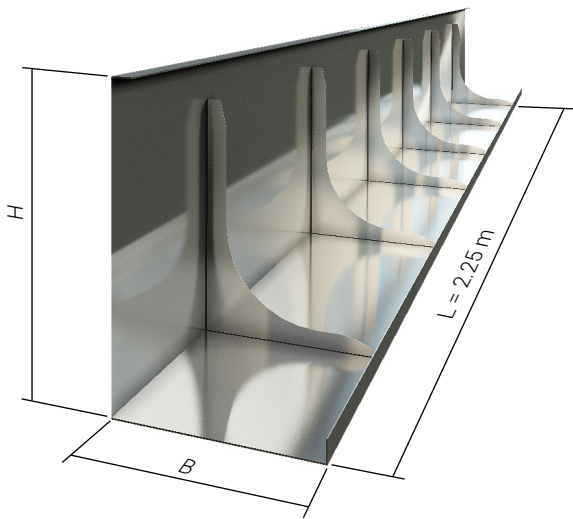


FORMTEC EDGE - is a permanent formwork made of metal sheet. It is used for making reinforced concrete slabs.



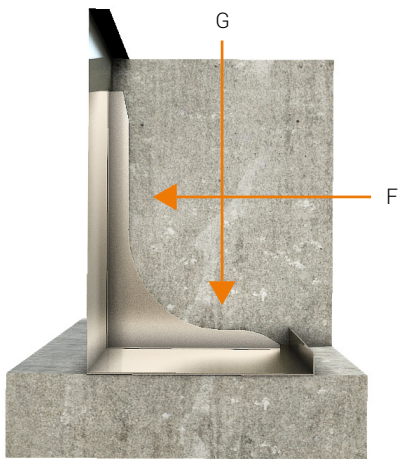
Formtec EDGE is **SELF - SUPPORTING**.
Standard height range: 14 - 50 cm

Advantages:

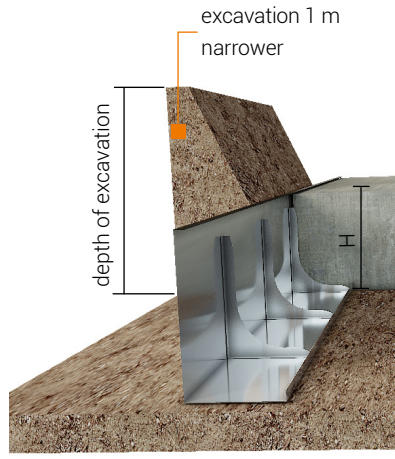
- fast and easy installation
- light construction
- no additional supports needed
- saving on smaller excavation for

Formtec EDGE formwork reduces costs.

Using Formtec EDGE formwork excavation for foundation can be narrower by around 1m.



concrete pressure (F) = weight of concrete (G)



excavation - Formtec EDGE



excavation - traditional formwork

ARTICLE NUMBER	TYPE	HEIGHT H [cm]	WIDTH B [cm]	LENGTH L [m]	QUANTITY [items/pallet]
530-01	EDGE 14	14	12	2.25	378
530-03	EDGE 18	18	12	2.25	315
530-04	EDGE 20	20	12	2.25	252
530-05	EDGE 22	22	13	2.25	234
530-06	EDGE 24	24	14	2.25	189
530-07	EDGE 25	25	15	2.25	157
530-10	EDGE 30	30	18	2.25	135
530-11	EDGE 35	35	21	2.25	90
530-12	EDGE 40	40	24	2.25	63
530-13	EDGE 45	45	27	2.25	63
530-14	EDGE 50	50	30	2.25	54

Possibility of manufacturing Formtec EDGE formwork in any given dimension required by the projects.



P A R T E C

FORMTEC EDGE

PERMANENT
FORMWORKS

FOUNDATIONS AND
COMBINED FOOTINGS

